



Hewitt Lea Funck

# Local Advertising

Houses and silos pre-manufactured in Sumner were shipped to the Western and upper Central areas of the country.

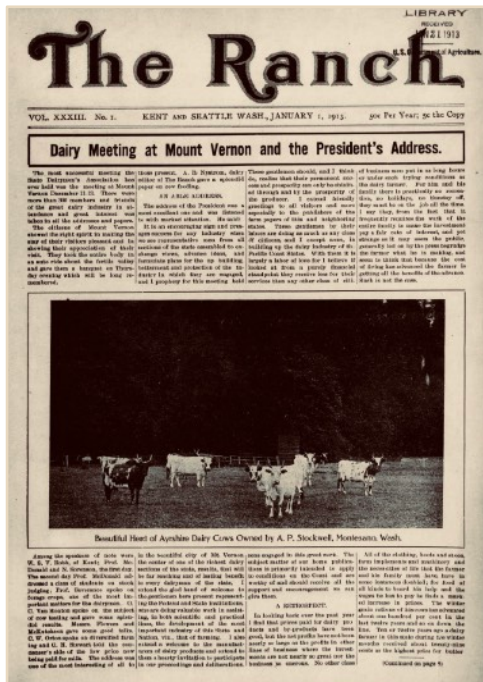
The main device used to reach the consumer was a massive 90 page catalog that displayed pictures and floor plans for over 70 different homes. Each had a detailed list of the lumber and building materials that the consumer would receive plus information on building the home themselves or having a local carpenter do the work.

There was an additional catalog just for the silo line.

Locally HLF sold pre-manufactured houses in the Tacoma, Seattle, Sumner area and also did a brisk business selling doors, windows, columns and trim to local builders.

One of their favorite local publication for advertising was the "Ranch" a twice a month publication based in Kent that catered to the building and farming trade.

Nationally the catalogs were promoted to the consumer with ads placed in newspapers and farm journals.





Hewitt Lea Funck

## Local Advertising, the Ranch

Page 11

The Ranch.

**MILLWORK DIRECT TO YOU AT BIG SAVING**

SPRING REPAIRS FOR LITTLE MONEY WHEN YOU BUY FROM HEWITT-LEA-FUNK CO.  
ORDER FROM THIS ADVERTISEMENT. SPECIAL ATTENTION TO SMALL ORDERS.  
**Freight Free on Carloads; One-third Freight on Less Carloads**  
HERE IS YOUR CATALOG: **HEWITT-LEA-FUNK CO.** ADDRESS 458 UNION AVE.  
TEAR OUT THESE PAGES. SEATTLE, WASHINGTON.

### FROM FOREST TO MILL TO USER

The old-growth yellow fir trees from which Hewitt-Lea-Funk Co. lumber and millwork are made grow to be 300 feet high or even taller, and as much as 12 feet in diameter. The general run of the timber is very large, the average thickness of the logs being at least 4 feet. Such trees make the finest lumber.

#### TO THE HOME-BUILDERS OF AMERICA . . . . .

In the pages which follow, the Hewitt-Lea-Funk Co. has listed and illustrated lumber, millwork and other building materials which are offered direct to consumer at prices which include just one small profit over cost of manufacture. The Hewitt-Lea-Funk Co. officers control not only the sawmills and planing mills, millwork factories and shingle mills, in which its products are manufactured, but the actual forests from which the logs are cut, and the logging railroads which transport the logs to the mills.

#### ALL MATERIALS SOLD ARE STANDARD GRADE

We guarantee that all materials sold will be better, grade for grade, than are sold in local yards. All listings are according to standard grading rules. We list No. 2 stock as No. 2, Second Quality as Second Quality, rather than give fanciful and deceptive names that fool the buyer. For an example of this, note illustration and prices of 5-Cross-Panel doors, where we give honest quotations on two grades.

#### ONE MILLION DOLLARS INVESTED IN BUSINESS

The capital stock of the Hewitt-Lea-Funk Co., invested in the business, is One Million Dollars, but the personal assets of its officers greatly exceeds this sum.

The Hewitt - Lea - Funk Co. carries in stock at all times enough lumber to permit filling orders in 24 to 48 hours.

Lumber, Millwork, Shingles and other Building Materials, made in the Hewitt-Lea-Funk Co. Sawmills and Millwork Factories and sold Direct to User at One Profit Prices

#### FAIR TERMS THAT SAVE YOU MONEY . . . . .

The Hewitt-Lea-Funk Co. sells for cash. All sales made with the positive guarantee that materials will be as represented or money refunded. Terms:

1. Cash with order required on sales \$25.00 or less.
2. One-third cash with order, balance on delivery. These and terms which follow apply to sales over \$25.00.
3. \$50.00 cash with order, balance on delivery.
4. Where customers are known to us, we ship materials without advance deposit.

In all cases where any part of price is to be paid on delivery, we require a letter from banker advising that the money is on deposit to complete payment.

You take absolutely no risk in ordering materials from the Hewitt-Lea-Funk Co. Everything we sell is guaranteed absolutely as represented or money refunded. The National Bank of Commerce, Seattle, or any mercantile agency, will tell you we are responsible.

The Hewitt - Lea - Funk Co. millwork factories are equipped with the latest and most improved machinery, which enables the company to sell at the lowest figures, direct to user, millwork of very high grade. The machine here illustrated is used for making old-growth fir columns.

The illustration at the right shows how very attractive is a home in which Hewitt - Lea - Funk Co. millwork is used. Our stock is complete and the quality high grade in every instance, while direct-to-user selling makes prices low. We can supply anything you need, and can make special articles to order on short notice.









Hewitt Lea Funck

# Local Advertising, the Ranch



**TAREYTOWN**  
1 1/2 inches thick  
Craftsman Fir Door

|           |        |
|-----------|--------|
| *2-0x6-0  | \$2.17 |
| *2-0x6-6  | 2.49   |
| *2-0x6-8  | 2.54   |
| *2-0x6-10 | 2.58   |
| *2-0x7-0  | 2.91   |
| *2-0x7-6  | 2.96   |
| *2-0x7-8  | 2.98   |
| *2-0x7-10 | 3.04   |
| *3-0x7-0  | 3.21   |



**MT. ST. HELENS**  
1 1/2 inches thick  
Flawless Bevel Plate

|           |         |
|-----------|---------|
| *2-0x6-0  | \$ 9.13 |
| *2-0x6-6  | 9.36    |
| *2-0x6-10 | 9.56    |
| *2-0x7-0  | 12.11   |
| *3-0x7-0  | 11.09   |

Gleazed Double Strength

|           |        |
|-----------|--------|
| *2-0x6-0  | \$4.43 |
| *2-0x6-6  | 6.92   |
| *2-0x6-10 | 6.93   |
| *2-0x7-0  | 7.36   |



**MT. BAKER**  
1 1/2 inches thick  
Flawless Bevel Plate

|           |         |
|-----------|---------|
| *2-0x6-0  | \$ 8.83 |
| *2-0x6-6  | 9.34    |
| *2-0x6-10 | 9.71    |
| *2-0x7-0  | 10.26   |

Gleazed Double Strength

|           |        |
|-----------|--------|
| *2-0x6-0  | \$4.54 |
| *2-0x6-6  | 6.64   |
| *2-0x6-10 | 6.96   |
| *2-0x7-0  | 7.33   |



**YALE**  
1 1/2 inches thick  
Gleazed Double Strength

|           |        |
|-----------|--------|
| *2-0x6-0  | \$3.30 |
| *2-0x6-6  | 3.43   |
| *2-0x6-10 | 3.50   |
| *2-0x7-0  | 3.83   |

Handsome and serviceable door, generally used as a back door, but very satisfactory as a cottage front door.



**YUKON**  
1 1/2 inches thick  
Gleazed Double Strength

|           |        |
|-----------|--------|
| *2-0x6-0  | \$3.46 |
| *2-0x6-6  | 3.83   |
| *2-0x6-10 | 3.89   |
| *2-0x7-0  | 4.18   |

A very good back or side door, well made, substantial, of handsome appearance, and a bargain at the price.

**BEAUTIFUL DOORS**  
AT SMALL PRICES WHEN YOU BUY DIRECT

Nothing will add more to the "home look" of your house or bungalow than one of the doors illustrated on these three pages. They are perfect in design and workmanship, and guaranteed to stand up under exposure to weather and wear. In fact, we guarantee them to swing true on substantial hinges for 25 years. The doors are made in our own millwork factories from lumber manufactured in the Hewitt-Lea-Funck Co. sawmills from logs cut in the company's own forests. Every economy in the factory end is made to reduce the price to you. Sold direct, without middlemen.

**PRICES INCLUDE FREIGHT ON CARLOADS  
ONE-THIRD FREIGHT ON LESS CARLOADS**

Unless you live next door to a door factory, you must pay freight on any doors you buy. Your local dealer must pay freight, and he, of course, charges it in his price. The prices quoted for doors illustrated in this catalog include freight when carload shipments are made. By this we mean that freight is paid by us if you or our agent order a carload of doors, or if you order one or more doors in connection with a carload of other materials. You can figure, therefore, if you are going to buy your lumber and other materials from the Hewitt-Lea-Funck Co., that the prices shown are those which will be charged you in your bill. You can choose an expensive door or an inexpensive one, just as you please. Because the front door is the most prominent feature of the exterior, we advise you to buy the best you can afford.



Peerless

**FRENCH DOORS, CLOSET and GABLE SASH**  
Prices include freight on carloads; one-third freight on less carloads



**5-CROSS-PANEL DOORS**  
FIRST CLEAR QUALITY

Door prices below are for First Clear quality. You may have seen doors advertised as "AA" or "A" or as "Select" or "Common." Such terms fool the buyer, but the doors don't. Our doors are guaranteed to swing true on substantial hinges for 25 years. Thoroughly kiln-dried; perfectly put together; sanded to a glass finish; take stain or paint beautifully; doors to be proud of. Prices below, remember, are for First Clear quality, including freight on carload orders. We pay one-third freight on less than carload orders.

| Size     | Price  | Size      | Price  |
|----------|--------|-----------|--------|
| 2-0x6-0  | \$1.87 | 2-8x6-8   | \$1.87 |
| 2-0x6-6  | 1.75   | 2-10x6-10 | 2.33   |
| 2-0x6-8  | 1.90   | 2-0x7-0   | 2.07   |
| 2-0x6-10 | 1.78   | 2-6x7-0   | 2.11   |
| 2-4x6-8  | 1.79   | 2-8x7-0   | 2.13   |
| 2-6x6-8  | 1.84   | 3-0x7-0   | 2.36   |

**SECOND CLEAR QUALITY**

We do not recommend nor guarantee second quality doors, such as are advertised as "AA" or "A" or "Selected" at cut prices. Prices below are lower than you have ever seen. If you want a cheap door, buy these, but if you want the very best value in a First Clear, guaranteed, 5-cross-panel door, buy those listed above.

Prices below are F.O.B. Seattle, for second quality doors.

| Size     | Price  | Size      | Price  |
|----------|--------|-----------|--------|
| 2-0x6-0  | \$1.08 | 2-8x6-8   | \$1.26 |
| 2-0x6-6  | 1.22   | 2-10x6-10 | 1.62   |
| 2-0x6-8  | 1.22   | 2-0x7-0   | 1.42   |
| 2-0x6-10 | 1.24   | 2-6x7-0   | 1.46   |
| 2-4x6-8  | 1.24   | 2-8x7-0   | 1.49   |
| 2-6x6-8  | 1.26   | 3-0x7-0   | 1.60   |

**MILLWORK DIRECT TO YOU AT BIG SAVING**  
SPRING REPAIRS FOR LITTLE MONEY WHEN YOU BUY FROM HEWITT-LEA-FUNCK CO.  
ORDER FROM THIS ADVERTISEMENT. SPECIAL ATTENTION TO SMALL ORDERS.

**Freight Free on Carloads; One-third Freight on Less Carloads**

HERE IS YOUR CATALOG; TEAR OUT THESE PAGES.  
**HEWITT-LEA-FUNCK CO.** ADDRESS 468 UNION AVE., SEATTLE, WASHINGTON.

Page 18

The Ranch.

©2020 SUMNER HISTORICAL SOCIETY, 1228 MAIN STREET SUMNER WASHINGTON 98390 253-299-5780





Hewitt Lea Funck

# Local Advertising, the Ranch

## TWO-LIGHT WINDOWS

PRICES LOW BECAUSE DIRECT TO YOU

These windows are made from the best soft, old-growth yellow fir. Fir lasts when used for silos, car sills, car siding and for ship construction. Fir lasts when made into sash. All stock thoroughly seasoned by going through our improved dry kilns. Soft yellow fir works up easily with tools. Buy these better fir windows, made according to Hewitt-Lea-Funck Co. high quality standard. They will not warp, stick, nor sag. Prices low because sold without middlemen.

**PRICES INCLUDE FREIGHT ON CARLOADS; ONE-THIRD FREIGHT ON LESS CARLOADS**

Illustration at left clearly shows check rail construction. Check rail windows fit together when closed so snugly that drafts between upper and lower sash are impossible. The Hewitt-Lea-Funck windows are thoroughly well made in every respect. Well glazed with clear, strong glass, which is held in place with live putty and plenty of points.

In ordering windows, always give width first, height second. Remember, prices are for complete window of two sash—upper and lower.

## FRAMES OF QUALITY

PRICES LOW BECAUSE DIRECT TO YOU

These fine old-growth yellow fir frames are honestly made, in our own factories, accurately cut, and thoroughly kiln dried. Will not warp, shrink, check or draw away from windows. Shipped knockdown, bundled as illustrated at right. Plain cap frames 10 cents less.

**PRICES INCLUDE FREIGHT ON CARLOADS; ONE-THIRD FREIGHT ON LESS CARLOADS**

INSIDE DOOR FRAMES FOR LESS

Inside door frames of clear yellow fir, made according to Hewitt-Lea-Funck standard; rabbeted jambs for 1 3/4 inch or 1 1/2 inch doors (say which you want when ordering); jambs 1 5-16 inches by 5 1/2 inches.

Inside frame for any door up to 3-0x7-0.....\$0 65  
Plain inside door jambs, any size to 3-0x7-0.....40

QUALITY OUTSIDE DOOR FRAMES

Outside door frames of clear yellow fir, sold at small prices because made in Hewitt-Lea-Funck Co. factories. Outside frame for any door up to 3-0x7-0.....\$1 30



NO EXTRAS WHEN YOU BUY THESE COMPLETE FRAMES

They include sill, jambs, head, outside casing with moulded cap screen stop, parting stop, pockets and Grand Rapids pulleys.

HERE IS YOUR CATALOG: TEAR OUT THESE PAGES.

**HEWITT-LEA-FUNCK CO.** ADDRESS 458 UNION AVE., SEATTLE, WASHINGTON.

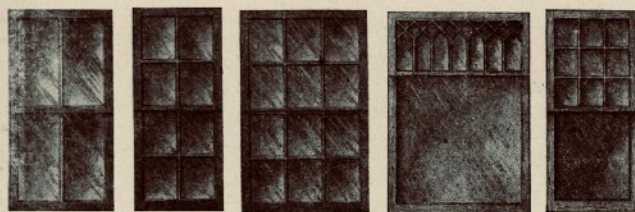
**MILLWORK DIRECT TO YOU AT BIG SAVING**  
SPRING REPAIRS FOR LITTLE MONEY WHEN YOU BUY FROM HEWITT-LEA-FUNCK CO.  
ORDER FROM THIS ADVERTISEMENT. SPECIAL ATTENTION TO SMALL ORDERS.  
*Freight Free on Carloads; One-third Freight on Less Carloads.*

| Size of Glass | Size of Opening<br>ft. in. ft. in. | Price Glazed |       | Weight of Entire Window |       | Sash Weights to Hang Window 4 Weights to Wd. |       | Price of Knock Down Window Frame | Price of Interior Trim Complete | Price of S. Window Frame and Trim | Weight of S. Window Frame and Trim |
|---------------|------------------------------------|--------------|-------|-------------------------|-------|--|-------|----------------------------------|---------------------------------|-----------------------------------|------------------------------------|
|               |                                    | S. S.        | D. S. | S. S.                   | D. S. | S. S.  | D. S. |                                  |                                 |                                   |                                    |
| 16x20         | 1-8 1/4x4-10                       | 10 1/2       | 1 02  | 12                      | 14    | 12   | 14    | 12                               | 14                              | 12                                | 14                                 |
| 16x22         | 1-8 1/4x4-12                       | 10 1/2       | 1 09  | 12                      | 14    | 12   | 14    | 12                               | 14                              | 12                                | 14                                 |
| 16x24         | 1-8 1/4x4-14                       | 10 1/2       | 1 16  | 12                      | 14    | 12   | 14    | 12                               | 14                              | 12                                | 14                                 |
| 16x26         | 1-8 1/4x4-16                       | 10 1/2       | 1 23  | 12                      | 14    | 12   | 14    | 12                               | 14                              | 12                                | 14                                 |
| 16x28         | 1-8 1/4x4-18                       | 10 1/2       | 1 30  | 12                      | 14    | 12   | 14    | 12                               | 14                              | 12                                | 14                                 |
| 16x30         | 1-8 1/4x4-20                       | 10 1/2       | 1 37  | 12                      | 14    | 12   | 14    | 12                               | 14                              | 12                                | 14                                 |
| 16x32         | 1-8 1/4x4-22                       | 10 1/2       | 1 44  | 12                      | 14    | 12   | 14    | 12                               | 14                              | 12                                | 14                                 |
| 16x34         | 1-8 1/4x4-24                       | 10 1/2       | 1 51  | 12                      | 14    | 12   | 14    | 12                               | 14                              | 12                                | 14                                 |
| 16x36         | 1-8 1/4x4-26                       | 10 1/2       | 1 58  | 12                      | 14    | 12   | 14    | 12                               | 14                              | 12                                | 14                                 |
| 16x38         | 1-8 1/4x4-28                       | 10 1/2       | 2 05  | 12                      | 14    | 12   | 14    | 12                               | 14                              | 12                                | 14                                 |
| 16x40         | 1-8 1/4x4-30                       | 10 1/2       | 2 12  | 12                      | 14    | 12   | 14    | 12                               | 14                              | 12                                | 14                                 |
| 16x42         | 1-8 1/4x4-32                       | 10 1/2       | 2 19  | 12                      | 14    | 12   | 14    | 12                               | 14                              | 12                                | 14                                 |
| 16x44         | 1-8 1/4x4-34                       | 10 1/2       | 2 26  | 12                      | 14    | 12   | 14    | 12                               | 14                              | 12                                | 14                                 |
| 16x46         | 1-8 1/4x4-36                       | 10 1/2       | 2 33  | 12                      | 14    | 12   | 14    | 12                               | 14                              | 12                                | 14                                 |
| 16x48         | 1-8 1/4x4-38                       | 10 1/2       | 2 40  | 12                      | 14    | 12   | 14    | 12                               | 14                              | 12                                | 14                                 |
| 16x50         | 1-8 1/4x4-40                       | 10 1/2       | 2 47  | 12                      | 14    | 12   | 14    | 12                               | 14                              | 12                                | 14                                 |
| 16x52         | 1-8 1/4x4-42                       | 10 1/2       | 2 54  | 12                      | 14    | 12   | 14    | 12                               | 14                              | 12                                | 14                                 |
| 16x54         | 1-8 1/4x4-44                       | 10 1/2       | 3 01  | 12                      | 14    | 12   | 14    | 12                               | 14                              | 12                                | 14                                 |
| 16x56         | 1-8 1/4x4-46                       | 10 1/2       | 3 08  | 12                      | 14    | 12   | 14    | 12                               | 14                              | 12                                | 14                                 |
| 16x58         | 1-8 1/4x4-48                       | 10 1/2       | 3 15  | 12                      | 14    | 12   | 14    | 12                               | 14                              | 12                                | 14                                 |
| 16x60         | 1-8 1/4x4-50                       | 10 1/2       | 3 22  | 12                      | 14    | 12   | 14    | 12                               | 14                              | 12                                | 14                                 |
| 16x62         | 1-8 1/4x4-52                       | 10 1/2       | 3 29  | 12                      | 14    | 12   | 14    | 12                               | 14                              | 12                                | 14                                 |
| 16x64         | 1-8 1/4x4-54                       | 10 1/2       | 3 36  | 12                      | 14    | 12   | 14    | 12                               | 14                              | 12                                | 14                                 |
| 16x66         | 1-8 1/4x4-56                       | 10 1/2       | 3 43  | 12                      | 14    | 12   | 14    | 12                               | 14                              | 12                                | 14                                 |
| 16x68         | 1-8 1/4x4-58                       | 10 1/2       | 3 50  | 12                      | 14    | 12   | 14    | 12                               | 14                              | 12                                | 14                                 |
| 16x70         | 1-8 1/4x4-60                       | 10 1/2       | 3 57  | 12                      | 14    | 12   | 14    | 12                               | 14                              | 12                                | 14                                 |
| 16x72         | 1-8 1/4x4-62                       | 10 1/2       | 4 04  | 12                      | 14    | 12   | 14    | 12                               | 14                              | 12                                | 14                                 |
| 16x74         | 1-8 1/4x4-64                       | 10 1/2       | 4 11  | 12                      | 14    | 12   | 14    | 12                               | 14                              | 12                                | 14                                 |
| 16x76         | 1-8 1/4x4-66                       | 10 1/2       | 4 18  | 12                      | 14    | 12   | 14    | 12                               | 14                              | 12                                | 14                                 |
| 16x78         | 1-8 1/4x4-68                       | 10 1/2       | 4 25  | 12                      | 14    | 12   | 14    | 12                               | 14                              | 12                                | 14                                 |
| 16x80         | 1-8 1/4x4-70                       | 10 1/2       | 4 32  | 12                      | 14    | 12   | 14    | 12                               | 14                              | 12                                | 14                                 |
| 16x82         | 1-8 1/4x4-72                       | 10 1/2       | 4 39  | 12                      | 14    | 12   | 14    | 12                               | 14                              | 12                                | 14                                 |
| 16x84         | 1-8 1/4x4-74                       | 10 1/2       | 4 46  | 12                      | 14    | 12   | 14    | 12                               | 14                              | 12                                | 14                                 |
| 16x86         | 1-8 1/4x4-76                       | 10 1/2       | 4 53  | 12                      | 14    | 12   | 14    | 12                               | 14                              | 12                                | 14                                 |
| 16x88         | 1-8 1/4x4-78                       | 10 1/2       | 5 00  | 12                      | 14    | 12   | 14    | 12                               | 14                              | 12                                | 14                                 |
| 16x90         | 1-8 1/4x4-80                       | 10 1/2       | 5 07  | 12                      | 14    | 12   | 14    | 12                               | 14                              | 12                                | 14                                 |
| 16x92         | 1-8 1/4x4-82                       | 10 1/2       | 5 14  | 12                      | 14    | 12   | 14    | 12                               | 14                              | 12                                | 14                                 |
| 16x94         | 1-8 1/4x4-84                       | 10 1/2       | 5 21  | 12                      | 14    | 12   | 14    | 12                               | 14                              | 12                                | 14                                 |
| 16x96         | 1-8 1/4x4-86                       | 10 1/2       | 5 28  | 12                      | 14    | 12   | 14    | 12                               | 14                              | 12                                | 14                                 |
| 16x98         | 1-8 1/4x4-88                       | 10 1/2       | 5 35  | 12                      | 14    | 12   | 14    | 12                               | 14                              | 12                                | 14                                 |
| 16x100        | 1-8 1/4x4-90                       | 10 1/2       | 5 42  | 12                      | 14    | 12   | 14    | 12                               | 14                              | 12                                | 14                                 |
| 16x102        | 1-8 1/4x4-92                       | 10 1/2       | 5 49  | 12                      | 14    | 12   | 14    | 12                               | 14                              | 12                                | 14                                 |
| 16x104        | 1-8 1/4x4-94                       | 10 1/2       | 5 56  | 12                      | 14    | 12   | 14    | 12                               | 14                              | 12                                | 14                                 |
| 16x106        | 1-8 1/4x4-96                       | 10 1/2       | 6 03  | 12                      | 14    | 12   | 14    | 12                               | 14                              | 12                                | 14                                 |
| 16x108        | 1-8 1/4x4-98                       | 10 1/2       | 6 10  | 12                      | 14    | 12   | 14    | 12                               | 14                              | 12                                | 14                                 |
| 16x110        | 1-8 1/4x4-100                      | 10 1/2       | 6 17  | 12                      | 14    | 12   | 14    | 12                               | 14                              | 12                                | 14                                 |
| 16x112        | 1-8 1/4x4-102                      | 10 1/2       | 6 24  | 12                      | 14    | 12   | 14    | 12                               | 14                              | 12                                | 14                                 |
| 16x114        | 1-8 1/4x4-104                      | 10 1/2       | 6 31  | 12                      | 14    | 12   | 14    | 12                               | 14                              | 12                                | 14                                 |
| 16x116        | 1-8 1/4x4-106                      | 10 1/2       | 6 38  | 12                      | 14    | 12   | 14    | 12                               | 14                              | 12                                | 14                                 |
| 16x118        | 1-8 1/4x4-108                      | 10 1/2       | 6 45  | 12                      | 14    | 12   | 14    | 12                               | 14                              | 12                                | 14                                 |
| 16x120        | 1-8 1/4x4-110                      | 10 1/2       | 6 52  | 12                      | 14    | 12   | 14    | 12                               | 14                              | 12                                | 14                                 |
| 16x122        | 1-8 1/4x4-112                      | 10 1/2       | 6 59  | 12                      | 14    | 12   | 14    | 12                               | 14                              | 12                                | 14                                 |
| 16x124        | 1-8 1/4x4-114                      | 10 1/2       | 7 06  | 12                      | 14    | 12   | 14    | 12                               | 14                              | 12                                | 14                                 |
| 16x126        | 1-8 1/4x4-116                      | 10 1/2       | 7 13  | 12                      | 14    | 12   | 14    | 12                               | 14                              | 12                                | 14                                 |
| 16x128        | 1-8 1/4x4-118                      | 10 1/2       | 7 20  | 12                      | 14    | 12   | 14    | 12                               | 14                              | 12                                | 14                                 |
| 16x130        | 1-8 1/4x4-120                      | 10 1/2       | 7 27  | 12                      | 14    | 12   | 14    | 12                               | 14                              | 12                                | 14                                 |
| 16x132        | 1-8 1/4x4-122                      | 10 1/2       | 7 34  | 12                      | 14    | 12   | 14    | 12                               | 14                              | 12                                | 14                                 |
| 16x134        | 1-8 1/4x4-124                      | 10 1/2       | 7 41  | 12                      | 14    | 12   | 14    | 12                               | 14                              | 12                                | 14                                 |
| 16x136        | 1-8 1/4x4-126                      | 10 1/2       | 7 48  | 12                      | 14    | 12   | 14    | 12                               | 14                              | 12                                | 14                                 |
| 16x138        | 1-8 1/4x4-128                      | 10 1/2       | 7 55  | 12                      | 14    | 12   | 14    | 12                               | 14                              | 12                                | 14                                 |
| 16x140        | 1-8 1/4x4-130                      | 10 1/2       | 8 02  | 12                      | 14    | 12   | 14    | 12                               | 14                              | 12                                | 14                                 |
| 16x142        | 1-8 1/4x4-132                      | 10 1/2       | 8 09  | 12                      | 14    | 12   | 14    | 12                               | 14                              | 12                                | 14                                 |
| 16x144        | 1-8 1/4x4-134                      | 10 1/2       | 8 16  | 12                      | 14    | 12   | 14    | 12                               | 14                              | 12                                | 14                                 |
| 16x146        | 1-8 1/4x4-136                      | 10 1/2       | 8 23  | 12                      | 14    | 12   | 14    | 12                               | 14                              | 12                                | 14                                 |
| 16x148        | 1-8 1/4x4-138                      | 10 1/2       | 8 30  | 12                      | 14    | 12   | 14    | 12                               | 14                              | 12                                | 14                                 |
| 16x150        | 1-8 1/4x4-140                      | 10 1/2       | 8 37  | 12                      | 14    | 12   | 14    | 12                               | 14                              | 12                                | 14                                 |
| 16x152        | 1-8 1/4x4-142                      | 10 1/2       | 8 44  | 12                      | 14    | 12   | 14    | 12                               | 14                              | 12                                | 14                                 |
| 16x154        | 1-8 1/4x4-144                      | 10 1/2       | 8 51  | 12                      | 14    | 12   | 14    | 12                               | 14                              | 12                                | 14                                 |
| 16x156        | 1-8 1/4x4-146                      | 10 1/2       | 8 58  | 12                      | 14    | 12   | 14    | 12                               | 14                              | 12                                | 14                                 |
| 16x158        | 1-8 1/4x4-148                      | 10 1/2       | 9 05  | 12                      | 14    | 12   | 14    | 12                               | 14                              | 12                                | 14                                 |
| 16x160        | 1-8 1/4x4-150                      | 10 1/2       | 9 12  | 12                      | 14    | 12   | 14    | 12                               | 14                              | 12                                | 14                                 |
| 16x162        | 1-8 1/4x4-152                      | 10 1/2       | 9 19  | 12                      | 14    | 12   | 14    | 12                               | 14                              | 12                                | 14                                 |
| 16x164        | 1-8 1/4x4-154                      | 10 1/2       | 9 26  | 12                      | 14    | 12   | 14    | 12                               | 14                              | 12                                | 14                                 |
| 16x166        | 1-8 1/4x4-156                      | 10 1/2       | 9 33  | 12                      | 14    | 12   | 14    | 12                               | 14                              | 12                                | 14                                 |
| 16x168        | 1-8 1/4x4-158                      | 10 1/2       | 9 40  | 12                      | 14    | 12   | 14    | 12                               | 14                              | 12                                | 14                                 |
| 16x170        | 1-8 1/4x4-160                      | 10 1/2       | 9 47  | 12                      | 14    | 12   | 14    | 12                               | 14                              | 12                                | 14                                 |
| 16x172        | 1-8 1/4x4-162                      | 10 1/2       | 9 54  | 12                      | 14    | 12   | 14    | 12                               | 14                              | 12                                | 14                                 |
| 16x174        | 1-8 1/4x4-164                      | 10 1/2       | 10 01 | 12                      | 14    | 12   | 14    | 12                               | 14                              | 12                                | 14                                 |
| 16x176        | 1-8 1/4x4-166                      | 10 1/2       | 10 08 | 12                      | 14    | 12   | 14    | 12                               | 14                              | 12                                | 14                                 |
| 16x178        | 1-8 1/4x4-168                      | 10 1/2       | 10 15 | 12                      | 14    | 12   | 14    | 12                               | 14                              | 12                                | 14                                 |
| 16x180        | 1-8 1/4x4-170                      | 10 1/2       | 10 22 | 12                      | 14    | 12   | 14    | 12                               | 14                              | 12                                | 14                                 |
| 16x182        | 1-8 1/4x4-172                      | 10 1/2       | 10 29 | 12                      | 14    | 12   | 14    | 12                               | 14                              | 12                                | 14                                 |
| 16x184        | 1-8 1/4x4-174                      | 10 1/2       | 10 36 | 12                      | 14    | 12   | 14    | 12                               | 14                              | 12                                | 14                                 |
| 16x186        | 1-8 1/4x4-176                      | 10 1/2       | 10 43 | 12                      | 14    | 12   | 14    | 12                               | 14                              | 12                                | 14                                 |
| 16x188        | 1-8 1/4x4-178                      | 10 1/2       | 10 50 | 12                      | 14    | 12   | 14    | 12                               | 14                              | 12                                | 14                                 |
| 16x190        | 1-8 1/4x4-180                      | 10 1/2       | 10 57 | 12                      | 14    | 12   | 14    | 12                               | 14                              | 12                                | 14                                 |
| 16x192        | 1-8 1/4x4-182                      | 10 1/2       | 11 04 | 12                      | 14    | 12   | 14    | 12                               | 14                              | 12                                | 14                                 |
| 16x194        | 1-8 1/4x4-184                      | 10 1/2       | 11 11 | 12                      | 14    | 12   | 14    | 12                               | 14                              | 12                                | 14                                 |
| 16x196        | 1-8 1/4x4-186                      | 10 1/2       | 11 18 | 12                      | 14    | 12   | 14    | 12                               | 14                              | 12                                | 14                                 |
| 16x198        | 1-8 1/4x4-188                      | 10 1/2       | 11 25 | 12                      | 14    | 12   | 14    | 12                               | 14                              | 12                                | 14                                 |
| 16x200        | 1-8 1/4x4-190                      | 10 1/2       | 11 32 | 12                      | 14    | 12   | 14    | 12                               | 14                              | 12                                | 14                                 |
| 16x202        | 1-8 1/4x4-192                      | 10 1/2       | 11 39 | 12                      | 14    | 12   | 14    | 12                               | 14                              | 12                                | 14                                 |
| 16x204        | 1-8 1/4x4-194                      | 10 1/2       | 11 46 | 12                      | 14    | 12   | 14    | 12                               | 14                              | 12                                | 14                                 |
| 16x206        | 1-8 1/4x4-196                      | 10 1/2       | 11 53 | 12                      | 14    | 12   | 14    | 12                               | 14                              | 12                                | 14                                 |
| 16x208        | 1-8 1/4x4-198                      | 10 1/2       | 12 00 | 12                      | 14    | 12   | 14    | 12                               | 14                              | 12                                | 14                                 |
| 16x210        | 1-8 1/4x4-200                      | 10 1/2       | 12 07 | 12                      | 14    | 12   | 14    | 12                               | 14                              | 12                                | 14                                 |
| 16x212        | 1-8 1/4x4-202                      | 10 1/2       | 12 14 | 12                      | 14    | 12   | 14    | 12                               | 14                              | 12                                | 14                                 |
| 16x214        | 1-8 1/4x4-204                      | 10 1/2       | 12 21 | 12                      | 14    | 12   | 14    | 12                               | 14                              | 12                                | 14                                 |
| 16x216        | 1-8 1/4x4-206                      | 10 1/2       | 12 28 | 12                      | 14    | 12   | 14    | 12                               | 14                              | 12                                | 14                                 |
| 16x218        | 1-8 1/4x4-208                      | 10 1/2       | 12 35 | 12                      | 14    | 12   | 14    | 12                               | 14                              | 12                                | 14                                 |
| 16x220        | 1-8 1/4x4-210                      | 10 1/2       | 12 42 | 12                      | 14    | 12   | 14    | 12                               | 14                              | 12                                | 14                                 |
| 16x222        | 1-8 1/4x4-212                      | 10 1/2       | 12 49 | 12                      | 14    | 12   | 14    | 12                               | 14                              | 12                                | 14                                 |
| 16x224        | 1-8 1/4x4-214                      | 10 1/2       | 12 56 | 12                      | 14    | 12   | 14    | 12                               | 14                              | 12                                | 14                                 |
| 16x226        | 1-8 1/4x4-216                      | 10 1/2       | 13 03 | 12                      | 14    | 12   | 14    | 12                               | 14                              | 12                                | 14                                 |
| 16x228        | 1-8 1/4x4-218                      | 10 1/2       | 13 10 | 12                      | 14    | 12   | 14    | 12                               | 14                              | 12                                | 14                                 |
| 16x230        | 1-8 1/4x4-220                      | 10 1/2       | 13 17 | 12                      | 14    | 12   | 14    | 12                               | 14                              | 12                                | 14                                 |
| 16x232        | 1-8 1/4x4-222                      | 10 1/2       | 13 24 | 12                      | 14    | 12   | 14    | 12                               | 14                              | 12                                | 14                                 |
| 16x234        | 1-8 1/4x4-224                      | 10 1/2       | 13 31 | 12                      | 14    | 12   | 14    | 12                               | 14                              | 12                                | 14                                 |
| 16x236        | 1-8 1/4x4-226                      | 10 1/2       | 13 38 | 12                      | 14    | 12   | 14    | 12                               | 14                              | 12                                | 14                                 |
| 16x238        | 1-8 1/4x4-228                      | 10 1/2       | 13 45 | 12                      | 14    | 12   | 14    | 12                               | 14                              | 12                                | 14                                 |
| 16x240        | 1-8 1/4x4-230                      | 10 1/2       | 13 52 | 12                      | 14    | 12   | 14    | 12                               | 14                              | 12                                | 14                                 |
| 16x242        | 1-8 1/4x4-232                      | 10 1/2       | 13 59 | 12                      | 14    | 12   | 14    | 12                               | 14                              | 12                                | 14                                 |
| 16x244        | 1-8 1/4x4-234                      | 10 1/2       |       |                         |       |  |       |                                  |                                 |                                   |                                    |



# Local Advertising, the Ranch

## QUALITY FIR WINDOWS QUALITY FIR MOULDINGS



**Four Light**  
FOUR-LIGHT WINDOWS  
Check Rail, 1 1/4 inches Thick  
Single Strength Glass

| Size of Glass | Price per Window | Size of Opening Ft. In. Ft. In. |
|---------------|------------------|---------------------------------|
| 10x20         | \$8 92           | 2-13-10                         |
| 10x24         | 1 08             | 2-14-6                          |
| 10x26         | 1 18             | 2-14-10                         |
| 12x16         | 1 03             | 2-13-6                          |
| 12x18         | 1 05             | 2-13-10                         |
| 12x20         | 1 11             | 2-14-6                          |
| 12x22         | 1 13             | 2-14-10                         |
| 12x24         | 1 20             | 2-14-6                          |
| 12x26         | 1 25             | 2-14-10                         |
| 12x28         | 1 30             | 2-14-6                          |
| 12x30         | 1 35             | 2-14-10                         |
| 14x24         | 1 38             | 2-14-6                          |
| 14x26         | 1 40             | 2-14-10                         |
| 14x28         | 1 45             | 2-14-6                          |
| 14x30         | 1 50             | 2-14-10                         |
| 14x32         | 1 55             | 2-14-6                          |

**Right Light**  
EIGHT-LIGHT WINDOWS  
Check Rail and Plain Rail  
Single Strength Glass

| Size of Glass | Price per Window | Size of Opening Ft. In. Ft. In. |
|---------------|------------------|---------------------------------|
| 8x10          | \$8 92           | 1-8-10                          |
| 8x12          | 1 03             | 1-10-6                          |
| 8x14          | 1 07             | 1-10-10                         |
| 8x16          | 1 11             | 1-11-6                          |
| 8x18          | 1 15             | 1-11-10                         |
| 8x20          | 1 20             | 1-12-6                          |
| 8x22          | 1 25             | 1-12-10                         |
| 8x24          | 1 30             | 1-13-6                          |
| 8x26          | 1 35             | 1-13-10                         |
| 8x28          | 1 40             | 1-14-6                          |
| 8x30          | 1 45             | 1-14-10                         |
| 8x32          | 1 50             | 1-15-6                          |
| 8x34          | 1 55             | 1-15-10                         |
| 8x36          | 1 60             | 1-16-6                          |
| 8x38          | 1 65             | 1-16-10                         |
| 8x40          | 1 70             | 1-17-6                          |
| 8x42          | 1 75             | 1-17-10                         |

**Twelve Light**  
TWELVE-LIGHT WINDOWS  
Check Rail and Plain Rail  
Single Strength Glass

| Size of Glass | Price per Window | Size of Opening Ft. In. Ft. In. |
|---------------|------------------|---------------------------------|
| 8x10          | \$8 92           | 1-8-10                          |
| 8x12          | 1 03             | 1-10-6                          |
| 8x14          | 1 07             | 1-10-10                         |
| 8x16          | 1 11             | 1-11-6                          |
| 8x18          | 1 15             | 1-11-10                         |
| 8x20          | 1 20             | 1-12-6                          |
| 8x22          | 1 25             | 1-12-10                         |
| 8x24          | 1 30             | 1-13-6                          |
| 8x26          | 1 35             | 1-13-10                         |
| 8x28          | 1 40             | 1-14-6                          |
| 8x30          | 1 45             | 1-14-10                         |
| 8x32          | 1 50             | 1-15-6                          |
| 8x34          | 1 55             | 1-15-10                         |
| 8x36          | 1 60             | 1-16-6                          |
| 8x38          | 1 65             | 1-16-10                         |
| 8x40          | 1 70             | 1-17-6                          |
| 8x42          | 1 75             | 1-17-10                         |

**Cottage**  
TWELVE-LIGHT WINDOWS  
Check Rail and Plain Rail  
Single Strength Glass

| Size of Glass | Price per Window | Size of Opening Ft. In. Ft. In. |
|---------------|------------------|---------------------------------|
| 8x10          | \$8 92           | 1-8-10                          |
| 8x12          | 1 03             | 1-10-6                          |
| 8x14          | 1 07             | 1-10-10                         |
| 8x16          | 1 11             | 1-11-6                          |
| 8x18          | 1 15             | 1-11-10                         |
| 8x20          | 1 20             | 1-12-6                          |
| 8x22          | 1 25             | 1-12-10                         |
| 8x24          | 1 30             | 1-13-6                          |
| 8x26          | 1 35             | 1-13-10                         |
| 8x28          | 1 40             | 1-14-6                          |
| 8x30          | 1 45             | 1-14-10                         |
| 8x32          | 1 50             | 1-15-6                          |
| 8x34          | 1 55             | 1-15-10                         |
| 8x36          | 1 60             | 1-16-6                          |
| 8x38          | 1 65             | 1-16-10                         |
| 8x40          | 1 70             | 1-17-6                          |
| 8x42          | 1 75             | 1-17-10                         |

**Queen Anne**  
TWELVE-LIGHT WINDOWS  
Check Rail and Plain Rail  
Single Strength Glass

| Size of Glass | Price per Window | Size of Opening Ft. In. Ft. In. |
|---------------|------------------|---------------------------------|
| 8x10          | \$8 92           | 1-8-10                          |
| 8x12          | 1 03             | 1-10-6                          |
| 8x14          | 1 07             | 1-10-10                         |
| 8x16          | 1 11             | 1-11-6                          |
| 8x18          | 1 15             | 1-11-10                         |
| 8x20          | 1 20             | 1-12-6                          |
| 8x22          | 1 25             | 1-12-10                         |
| 8x24          | 1 30             | 1-13-6                          |
| 8x26          | 1 35             | 1-13-10                         |
| 8x28          | 1 40             | 1-14-6                          |
| 8x30          | 1 45             | 1-14-10                         |
| 8x32          | 1 50             | 1-15-6                          |
| 8x34          | 1 55             | 1-15-10                         |
| 8x36          | 1 60             | 1-16-6                          |
| 8x38          | 1 65             | 1-16-10                         |
| 8x40          | 1 70             | 1-17-6                          |
| 8x42          | 1 75             | 1-17-10                         |

**Queen Anne Windows (Also Called Colonial)**  
Queen Anne windows, with 9 lights in upper sash, will be furnished in any size at 45 cents in addition to prices of two-light windows.

**FRAMES FOR WINDOWS, DESIGN No. 128**  
Check Rail, 1 1/4 inches Thick

| Size Opening | Top Glass    | Bottom Glass | Double Strength Glass |
|--------------|--------------|--------------|-----------------------|
| Width Height | Width Height | Width Height | Width Height          |
| 3-8 1/2 3-5  | 40 16        | 40 40        | \$7 62                |
| 4-8 1/2 4-6  | 40 16        | 40 44        | 8 00                  |
| 4-8 1/2 4-8  | 44 16        | 44 44        | 8 80                  |
| 4-8 1/2 4-10 | 44 16        | 44 44        | 8 80                  |

Cottage windows listed above furnished also with plain upper sash, not divided, at \$2.50 each less than prices quoted above.



**GLAZED STALL SASH**  
One Light, 1 1/4 inches Thick  
Single Strength Glass

| Size of Glass | Price per Sash | Size of Opening Ft. In. Ft. In. |
|---------------|----------------|---------------------------------|
| 8x10          | \$8 42         | 0-11-1/2-11-1/2                 |
| 8x12          | 46             | 1-1-1/2-1-1/2                   |
| 8x14          | 53             | 1-1-1/2-1-1/2                   |
| 8x16          | 57             | 1-1-1/2-1-1/2                   |
| 8x18          | 61             | 1-1-1/2-1-1/2                   |
| 8x20          | 64             | 1-1-1/2-1-1/2                   |

**GLAZED BARN SASH**  
Four Lights, 1 1/4 inches Thick  
Single Strength Glass

| Size of Glass | Price per Sash | Size of Opening Ft. In. Ft. In. |
|---------------|----------------|---------------------------------|
| 8x10          | \$8 58         | 1-8-1/2-8-1/2                   |
| 8x12          | 65             | 1-10-1/2-8-1/2                  |
| 8x14          | 73             | 1-12-1/2-8-1/2                  |
| 8x16          | 80             | 1-14-1/2-8-1/2                  |
| 8x18          | 88             | 1-16-1/2-8-1/2                  |
| 8x20          | 95             | 1-18-1/2-8-1/2                  |

**GLAZED CELLAR SASH**  
Two Lights, 1 1/4 inches Thick  
Single Strength Glass

| Size of Glass | Price per Sash | Size of Opening Ft. In. Ft. In. |
|---------------|----------------|---------------------------------|
| 8x10          | \$8 54         | 2-1-1/2-4                       |
| 8x12          | 57             | 2-1-1/2-6                       |
| 8x14          | 67             | 2-1-1/2-8                       |
| 8x16          | 70             | 2-1-1/2-10                      |
| 8x18          | 74             | 2-1-1/2-12                      |
| 8x20          | 82             | 2-1-1/2-14                      |

**GLAZED CELLAR SASH**  
Three Lights, 1 1/4 inches Thick  
Single Strength Glass

| Size of Glass | Price per Sash | Size of Opening Ft. In. Ft. In. |
|---------------|----------------|---------------------------------|
| 8x10          | \$8 55         | 2-4-1/2-4                       |
| 8x12          | 60             | 2-4-1/2-6                       |
| 8x14          | 67             | 2-4-1/2-8                       |
| 8x16          | 74             | 2-4-1/2-10                      |
| 8x18          | 81             | 2-4-1/2-12                      |
| 8x20          | 88             | 2-4-1/2-14                      |

**CROWN MOULDING**

| No.  | Size        | Weight  | Price |
|------|-------------|---------|-------|
| 8000 | 1/2 x 3 1/2 | 44 lbs. | 1 64  |
| 8002 | 1/2 x 3 1/2 | 55 lbs. | 1 98  |
| 8003 | 1/2 x 3 1/2 | 49 lbs. | 1 41  |
| 8007 | 1/2 x 3 1/2 | 27 lbs. | 94    |
| 8008 | 1/2 x 3 1/2 | 30 lbs. | 1 17  |
| 8013 | 1/2 x 3 1/2 | 73 lbs. | 2 35  |

**CROWN MOULDING**

| No.  | Size          | Weight  | Price  |
|------|---------------|---------|--------|
| 8016 | 1 1/2 x 1 1/2 | 23 lbs. | \$0 94 |
| 8017 | 1 1/2 x 1 1/2 | 17 lbs. | 77     |
| 8018 | 1 1/2 x 1 1/2 | 33 lbs. | 1 41   |
| 8019 | 1 1/2 x 1 1/2 | 46 lbs. | 1 41   |
| 8020 | 1 1/2 x 1 1/2 | 51 lbs. | 1 84   |

**SPRUNG COVE MOULDING**

| No.  | Size        | Weight  | Price  |
|------|-------------|---------|--------|
| 8025 | 1/2 x 2 1/2 | 27 lbs. | \$1 17 |
| 8026 | 1/2 x 2 1/2 | 28 lbs. | 1 41   |
| 8027 | 1/2 x 2 1/2 | 41 lbs. | 1 88   |
| 8029 | 1/2 x 2 1/2 | 38 lbs. | 1 84   |

**Bull-Nosed Casing**

| No.      | Size        | Weight  | Price  |
|----------|-------------|---------|--------|
| 8206     | 1/2 x 3 1/2 | 60 lbs. | \$1 67 |
| 8209 1/4 | 1/2 x 4 1/2 | 80 lbs. | 2 09   |
| 8310     | 1/2 x 4 1/2 | 90 lbs. | 2 15   |

**Mission Casing**

| No. | Size        | Weight  | Price  |
|-----|-------------|---------|--------|
| 500 | 1/2 x 4 1/2 | 80 lbs. | \$2 04 |

**Colonial Casing**

| No. | Size        | Weight  | Price  |
|-----|-------------|---------|--------|
| 500 | 1/2 x 4 1/2 | 80 lbs. | \$2 09 |

**Plaster Casing**

| No.  | Size        | Weight  | Price  |
|------|-------------|---------|--------|
| 3341 | 1/2 x 4 1/2 | 80 lbs. | \$2 09 |

**O. G. Casing**

| No.  | Size        | Weight  | Price  |
|------|-------------|---------|--------|
| 8384 | 1/2 x 4 1/2 | 83 lbs. | \$2 09 |

**COVE or SCOTIA**

| No.  | Size        | Weight  | Price  |
|------|-------------|---------|--------|
| 8058 | 1/2 x 1 1/2 | 8 lbs.  | \$0 47 |
| 8060 | 1/2 x 1 1/2 | 10 lbs. | 47     |
| 8061 | 1/2 x 1 1/2 | 13 lbs. | 58     |
| 8062 | 1/2 x 1 1/2 | 20 lbs. | 84     |

**BED Moulding**

| No.  | Size        | Weight  | Price  |
|------|-------------|---------|--------|
| 8040 | 1/2 x 1 1/2 | 9 lbs.  | \$0 47 |
| 8043 | 1/2 x 1 1/2 | 19 lbs. | 77     |

**O. G. Window and Door Stop**

| No.  | Size        | Weight  | Price  |
|------|-------------|---------|--------|
| 8082 | 1/2 x 1 1/2 | 7 lbs.  | \$0 42 |
| 8083 | 1/2 x 1 1/2 | 10 lbs. | 47     |
| 8084 | 1/2 x 1 1/2 | 12 lbs. | 52     |
| 8085 | 1/2 x 1 1/2 | 15 lbs. | 55     |
| 8086 | 1/2 x 1 1/2 | 18 lbs. | 75     |
| 8090 | 1/2 x 1 1/2 | 25 lbs. | 88     |

**Base To Go With Casing Illustrated.**

| No. | Size        | Weight   | Price  |
|-----|-------------|----------|--------|
| 502 | 1/2 x 7 1/2 | 118 lbs. | \$2 84 |
| 560 | 1/2 x 7 1/2 | 136 lbs. | \$2 84 |

**O. G. Three Member**

| No.  | Size        | Weight   | Price  |
|------|-------------|----------|--------|
| 5421 | 1/2 x 7 1/2 | 128 lbs. | \$2 84 |

**Base Moulding**

| No.  | Size        | Weight  | Price  |
|------|-------------|---------|--------|
| 5420 | 1/2 x 7 1/2 | 27 lbs. | \$1 84 |

**Plate Rail**

Attractive dining room with plate rail and veneer panels (page costs little. Give size for price.

**Top Member**

| No. | Size        | Weight  | Price  |
|-----|-------------|---------|--------|
| 526 | 1/2 x 4 1/2 | 77 lbs. | \$2 30 |
| 527 | 1/2 x 4 1/2 | 65 lbs. | \$1 70 |

**Corner Member**

| No.  | Size        | Weight  | Price  |
|------|-------------|---------|--------|
| 8008 | 1/2 x 2 1/2 | 30 lbs. | \$0 84 |

**Bull-Nosed Base Shoe**

| No.  | Size        | Weight  | Price  |
|------|-------------|---------|--------|
| 8422 | 1/2 x 1 1/2 | 10 lbs. | \$0 47 |

**Quarter Round**

| No.  | Size        | Weight  | Price  |
|------|-------------|---------|--------|
| 8083 | 1/2 x 1 1/2 | 6 lbs.  | \$0 47 |
| 8085 | 1/2 x 1 1/2 | 12 lbs. | 47     |
| 8086 | 1/2 x 1 1/2 | 15 lbs. | 47     |

**Panel Moulding**

| No.  | Size        | Weight  | Price  |
|------|-------------|---------|--------|
| 8181 | 1/2 x 1 1/2 | 6 lbs.  | \$0 54 |
| 8184 | 1/2 x 1 1/2 | 14 lbs. | 70     |

**Picture Moulding**

| No.  | Size          | Weight  | Price  |
|------|---------------|---------|--------|
| 8284 | 1 1/2 x 1 1/2 | 20 lbs. | \$0 84 |

**Batten**

| No.  | Size   | Weight  | Price  |
|------|--------|---------|--------|
| 6149 | 7-16x2 | 21 lbs. | \$1 05 |

**Blocks Base**

| No. | Size       | Weight     | Price  |
|-----|------------|------------|--------|
| 801 | 4 1/2 x 11 | 1 1/2 lbs. | \$0 04 |
| 802 | 5 x 11     | 1 1/2 lbs. | \$0 04 |
| 803 | 6 1/2 x 11 | 1 1/2 lbs. | \$0 04 |

**Corner Blocks Rosette**

| No. | Size          | Weight     | Price  |
|-----|---------------|------------|--------|
| 610 | 4 1/2 x 4 1/2 | 1 1/2 lbs. | \$1 40 |
| 611 | 5 x 5         | 1 1/2 lbs. | \$1 40 |
| 612 | 6 1/2 x 6 1/2 | 1 1/2 lbs. | \$1 40 |

**Wall Rosette**

| No. | Size                           | Weight | Price |
|-----|--------------------------------|--------|-------|
| 620 | (For 3 1/2 in. rail), each 15c |        |       |

**Interior Finish**

Fir millwork, because of its beautiful grain, makes very attractive interior finish and is rapidly taking place of oak and other woods that cost more than twice as much. Treatment is simple and cost small. See page 12 for information regarding oil stains and method of finishing.

**Freight Free on Carloads; One-third Freight on Less Carloads**

HERE IS YOUR CATALOG: **HEWITT-LEA-FUNK CO.** ADDRESS: 458 UNION AVE. SEATTLE, WASHINGTON.

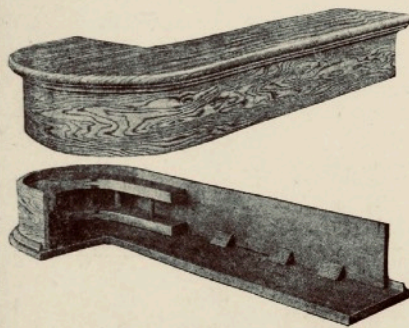




Hewitt Lea Funck

# Local Advertising, the Ranch

## QUALITY STAIR MILLWORK FIR COLUMNS AND NEWELS



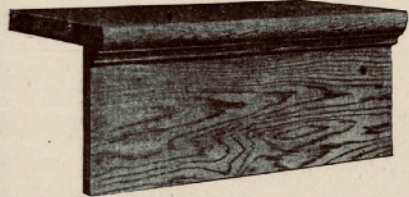
### HALF CIRCLE STARTING STEPS

Clear, vertical-grain tread, clear slash-grain riser and moulding. We are proud to show the starting steps illustrated at the left, because the pictures, reproduced from actual photographs, prove to anyone who knows millwork that this is honest millwork, carefully and accurately put together, and braced in every way to insure long life.

**PRICES:**  
For stairs up to 3 feet 6 inches Price, each **\$4.70**  
For stairs up to 4 feet 6 inches Price, each **\$5.00**

Be sure to state whether left-hand or right-hand step is wanted. Illustration is of left-hand step. Same price for either style.

All Prices Quoted on This Page Include Freight on Carloads; One-Third Freight on Less Carloads

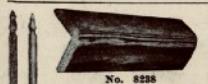


### FIR STEPPING Vertical Grain Treads

| Thickness and width | Length      | Price per piece | Grade No. 1 | Grade No. 2 |
|---------------------|-------------|-----------------|-------------|-------------|
| 1 1/2 x 10          | 2 ft. 6 in. | 20c             | 18c         |             |
| 1 1/2 x 10          | 4 ft. 6 in. | 35c             | 30c         |             |
| 1 1/2 x 12          | 2 ft. 6 in. | 25c             | 22c         |             |
| 1 1/2 x 12          | 4 ft. 6 in. | 31c             | 28c         |             |

### Clear Slash Grain Risers, Soft Old Growth Stock

| Thickness and width | Length      | Price per piece |
|---------------------|-------------|-----------------|
| 1 x 8               | 2 ft. 6 in. | 10c             |
| 1 x 8               | 4 ft. 6 in. | 18c             |



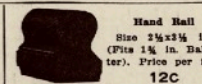
### CORNER BEADS

Style A or B, illustrated at left; style No. 1228, shown above. Diameter of A and B 1 1/2 inches; No. 1228, 1 1/4 inches; all four feet long. Price each 12c. Corner Bead No. 1228, per 100 lineal feet .....\$2.25



### Round Hand Rail

Diameter 1 1/2 inches. Price per 100 lineal feet .....\$2.43



### Hand Rail

Size 2 1/2 x 3 1/2 in. (Pits 1 1/2 in. Baluster). Price per foot 12c

### Square Baluster Stock

1 1/2 x 1 1/2 in., per ft. ....15c

### String Boards

(Selected to go with other stair millwork ordered.)

1 x 11 in., per ft. ....9c

1 x 12 in., per ft. ....10c

### Stair Balusters

(Selected to go with other stair millwork ordered.)

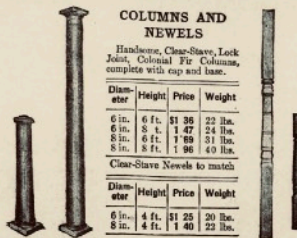
1 1/2 x 1 1/2 in., each .....7c

1 1/2 x 1 1/2 in., each .....7c

1 1/2 x 1 1/2 in., each .....7c

### Shoe Rail with Fillet

Rabbetted to fit 1 1/2 in. baluster. 1 1/2 x 3 in., per ft. ....25c



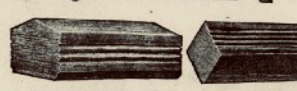
### COLUMNS AND NEWELS

Handsome, Clear-Slash, Lock Joint, Colonial Fir Columns, complete with cap and base.

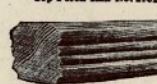
| Diameter | Height | Price  | Weight  |
|----------|--------|--------|---------|
| 6 in.    | 6 ft.  | \$1 36 | 22 lbs. |
| 6 in.    | 8 ft.  | 1 47   | 24 lbs. |
| 8 in.    | 6 ft.  | 1 89   | 31 lbs. |
| 8 in.    | 8 ft.  | 1 96   | 40 lbs. |

Clear-Slash Newels to match

| Diameter | Height | Price  | Weight  |
|----------|--------|--------|---------|
| 6 in.    | 4 ft.  | \$1 25 | 20 lbs. |
| 8 in.    | 4 ft.  | 1 40   | 22 lbs. |



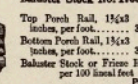
### Top Porch Rail No. 1701



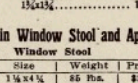
### Top Porch Rail No. 1702



### Baluster Stock No. 1706



### Top Porch Rail, 15x13



### Baluster Stock or Frieze Rail

per 100 lineal feet

15x13 .....\$1 25

15x13 .....\$1 50

## PAINTS AND BUILDING PAPERS

### READY MIXED PAINTS

(Prices, F. O. B. Seattle)

Barn and Roof Paint (red, drab or brown), a good grade, and unusual value for the price.

1-gallon cans .....\$1.00

5-gallon cans .....\$5.10

50-gallon barrels .....\$45.00

Ready Mixed House Paint (also used for trimming barns, furnished in all standard colors — ask for color card). Prices much lower than charged in stores. Superior quality.

1-quart cans .....42c

1-gallon cans .....\$1.50

5-gallon cans .....\$7.50

50-gallon barrels .....\$65.00

Decorative Enamel for interior finish. Best quality.

1-quart cans .....60c

1-gallon cans .....\$1.20

5-gallon cans .....\$6.00

H-L-F Best Quality Floor Paint; dries overnight, very long wearing. Stocked in golden yellow, navy gray and oak.

1-quart cans .....\$1.74

1-gallon cans .....\$2.38

5-gallon cans .....\$11.90

Freight Free on Carload Shipments; One-Third Freight on Less than Carloads

### Clear Fir Turned Porch Columns

|       |    |                |
|-------|----|----------------|
| 4x4-0 | 50 | Weight 20 lbs. |
| 4x4-0 | 60 | Weight 22 lbs. |
| 4x4-0 | 70 | Weight 27 lbs. |
| 4x4-0 | 80 | Weight 32 lbs. |

### Clear Fir Turned Porch Balusters

1 1/2 x 2 1/2 inches, 8c each  
1 1/2 x 3 inches, 8c each  
Lots of 50, either size, 1c less

### Solid Turned Newels

6x4-4, 20c plain, 34c fancy Weight 11 lbs.  
6x4-4, 41c plain, 48c fancy Weight 15 lbs.  
6x4-4, 41c plain, 56c fancy Weight 24 lbs.

Remember, that these quotations include freight, when millwork is part of a carload shipment, and that we pay one-third freight on less than carload orders.

### Slash Grain Fir Panels

Made of three-ply, rotary-cut veneer, one-half inch thick. Will not check or warp. Prices below for panels finished one side only. Add 10c per cent for finish on both sides.

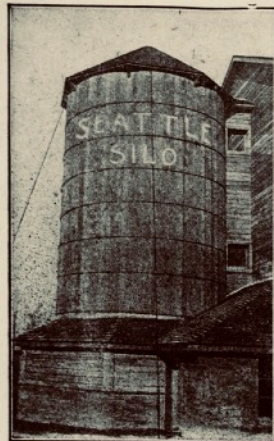
|   |                 |
|---|-----------------|
| below for panels finished one side only. Add ten per cent for finish on both sides. |                 |
| Size  | Price per piece |
| 12x43   | \$0 37          |
| 12x60   | 47              |
| 12x43   | 49              |
| 12x43   | 55              |
| 12x60   | 69              |
| 12x60   | 85              |
| 20x60   | 1 07            |
| 24x43   | 1 02            |
| 24x60   | 1 28            |
| 28x60   | 1 43            |
| 30x43   | 1 54            |
| 30x60   | 1 91            |
| Write for prices on lengths   |                 |





Hewitt Lea Funck

# Local Advertising, the Ranch



J. T. Smith's Silo at Heron Lake, Minn.

## IMPROVED SILO DIRECT TO YOU AT BIG SAVING BIG BOOK OF PLANS 10 CENTS

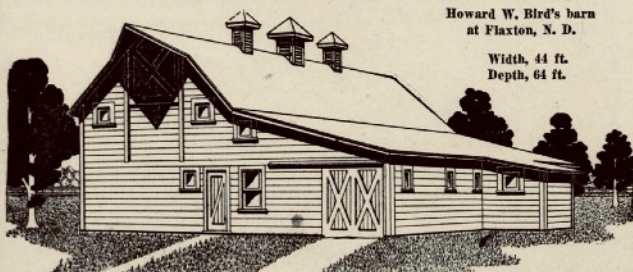
SEATTLE SILOS are honestly made of Douglas Fir staves manufactured in the Hewitt-Lea-Funck Co. mills from logs cut in forests owned or controlled by officers of the company. They have improved doors, so constructed that the door bars and bars which connect the hoops form a ladder.

### WRITE FOR PRICE ON SIZE YOU WANT

Write today for delivered price on the size of silo you are considering. Then you'll know positively that there is a chance for you to make a big saving by buying your silo direct instead of through an agent. Send for interesting silo literature, which tells you silo facts you should know.

**HEWITT-LEA-FUNCK CO.**  
458 Union Ave., Seattle, Wash.

## BUILD A FIR BARN BIG SAVING ON LUMBER WHEN YOU BUY DIRECT



Howard W. Bird's barn at Flaxton, N. D.

Width, 44 ft.  
Depth, 64 ft.

Lumber, Millwork, Hardware, Paint for this barn, F. O. B. Seattle

**\$630.62**

Money-Back Plans and Specifications.....\$2.00

Howard W. Bird of Flaxton, N. D., wanted a barn. He sent a rough sketch showing his ideas, and we prepared plans for him, allowing him the cost when he ordered the lumber. He saved \$150.00 and got a barn built of old-growth yellow fir, just as he wanted it.

### BARN FOLDER FOR 4 CENTS

Get this folder for the newest and best in barn plans. Every barn designed after ideas of practical farmers. Shows Hewitt-Lea-Funck Co. famous gambrel-roofed barn.

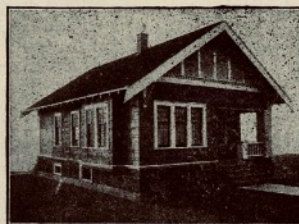
### PLANS TO ORDER, \$10.00

We draw practical plans, just as you want them, for \$10.00 a set, and allow credit for this amount when materials are ordered. Send today for Copyrighted Plan Sheet. Free.

A better book than architects sell for 50 cents to \$2.00. Shows illustrations of more than 100 homes, from actual photographs, and figures showing every item of cost, together with guaranteed quotations of Lumber, Millwork, Hardware, Paint, Electric Bell for each home. No extras.

If you are considering building a house, now or later, by all means get this better Plan Book. It was prepared by practical architects and builders for the use of practical people who want full value for their money. Houses from three rooms to nine rooms, and costing from \$750.00 to \$3,500.00

For \$2.00, instead of \$25.00 to \$200.00, charged by architects, we sell you plans and specifications for any house shown in the Plan Book. These are practical plans, and will save their small cost many times in the savings they point out. Money paid for plans allowed as credit on orders for materials. Send Ten Cents today for your copy of the Plan Book.



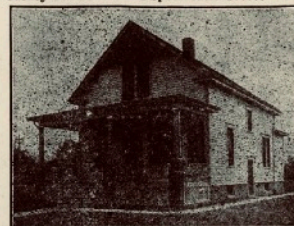
Design No. 405—Four Rooms

Lumber, Millwork, Hardware, Paint, Electric Bell, F.O.B. Seattle (no extras)....\$477 48  
Money-Back Plans and Specifications..... 2 00



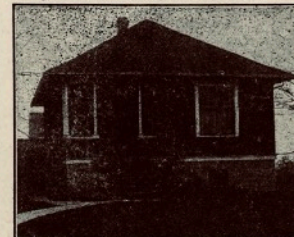
Design No. 701—Seven Rooms

Lumber, Millwork, Hardware, Paint, Electric Bell, F.O.B. Seattle (no extras)....\$830 88  
Money-Back Plans and Specifications..... 2 00



Design No. 629—Six Rooms

Lumber, Millwork, Hardware, Paint, Electric Bell, F.O.B. Seattle (no extras)....\$723 23  
Money-Back Plans and Specifications..... 2 00



Design No. 506—Five Rooms

Lumber, Millwork, Hardware, Paint, Electric Bell, F.O.B. Seattle (no extras)....\$475 51  
Money-Back Plans and Specifications..... 2 00

**MILLWORK DIRECT TO YOU AT BIG SAVING**  
SPRING REPAIRS FOR LITTLE MONEY WHEN YOU BUY FROM HEWITT-LEA-FUNCK CO.  
ORDER FROM THIS ADVERTISEMENT. SPECIAL ATTENTION TO SMALL ORDERS.  
*Freight Free on Carloads; One-third Freight on Less Carloads*  
HERE IS YOUR CATALOG:  
TEAR OUT THESE PAGES.  
**HEWITT-LEA-FUNCK CO.** ADDRESS 458 UNION AVE., SEATTLE, WASHINGTON.