



January 8, 2019

Winter 2018

## Halloween at the Ryan House Museum



**The M&Ms ready for the treaters!**



In the afternoon our docents decorated the house and lawn in a vintage Halloween fashion. The green and red "M & M's" (the Stroeves) had a grand time working the early evening event. Lots of happy treaters! Each treat bag had a sticker with the museum's holiday greeting.



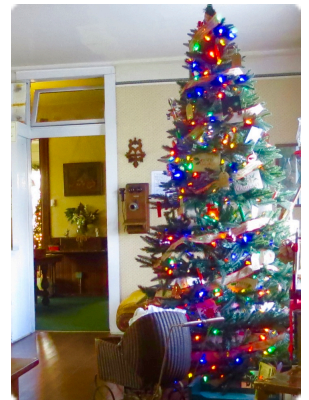
**October 31st brought over 1300 people to our museum's front lawn.**



## Christmas and 92nd Annual Tree Lighting at the Ryan House Museum

This year's decorating featured unique seasonal collections that historical society and community members shared with us. The Stroeve's Santa collection, Marcha Lindberg's angel collection, an old Sumner Christmas parade with miniatures from the Loseths and Tom Young's wonderful teddy bears, vintage dolls and toys.

In addition, the kitchen featured heritage artifacts and a tree surrounded by vintage toys, many with a historical connection to the valley. The cabin was decorated in vintage style.



**Saturday, November 24th**, we carried on the tradition started by Lewis Ryan in 1926 when he decorated the holly tree on the museum's front lawn and named it *Sumner's Tree of Light*. This year we had a huge turnout. We had about 40 members of the Sumner High School Choir singing from the front porch. The crowd was estimated at about 500 people who packed the house and filled the front lawn. The overflow watched from across the street. They were provided a commemorative songbook for singing along with the choir.

The event was a partnership with the Sumner Downtown Promotional Association, Calvary Community Church, GFWC Valley Volunteers, the Sumner Choral Association and the City of Sumner. Calvary Church provided fresh cedar garland for the porch and brought a popcorn machine to serve popcorn. The church also installed snow machines on the porch roof that turned the front lawn into a winter playland for the kids and many of the adults. The Society and Valley Volunteers provided hot cider and over 30 dozen cookies.



**Tree Lighting Photo by Sara Lucas**





November, 2018. The Sumner Arts Commission sponsored "Write in the Valley" along with the Pierce County Library, Sumner Branch. The Commission incorporated our Self Guided History Tour of downtown buildings into the program.



## On the Road to Buckley!

The Friends of the Buckley Library and the Foothills Historical Society have invited us to participate in their *Discover Pierce County History* event Saturday, February 23rd at their museum in Buckley.



## Sumner University

March 26th, A short tour of the Ryan House Museum will be part of the City Of Sumner's 2019 Sumner University program.

## January Vote on Bylaws Revision, New Board Position of Director Emeritus

A minor and a major revision to the Society's Bylaws will be voted on at the January Board meeting. January 26, 8:30 am at the Ryan House Museum.

All Society members are invited to attend and vote on the revisions.

The minor revision to section IV.8 adds detail to the manner in which a Board member may resign. The major revision introduces a new Board Position, Director Emeritus.

This honorific position allows a current or former board member to stay associated with the board, but lessens the requirements that are part of a Board Member's position.

### The Bylaws Revisions

IV. 8. If a Director is absent from three consecutive meetings for reasons that the Board has failed to declare to be sufficient, his/her resignation may be deemed to have been tendered and accepted. A Director may resign from the Board at any time with a written notice to the Board. Any vacancies that may occur on the Board by reason of death, resignation, or otherwise may be filled by the remaining members of the Board for the unexpired term.

IV 9. There shall be a Board member category of Director Emeritus. A Director Emeritus is nominated and elected by the board of directors.

a. Eligibility: In order to be considered for designation as a Board Director Emeritus, a person must be a current or former member of the organization's Board of Directors who has:

- Served the society's Board of Directors with distinction.
- Held an important leadership role and made significant contributions.
- Engaged in volunteer or advocacy activities in his or her service on the Board.
- Completed the term(s) for which he or she was appointed.
- Participated in the Society's activities (events, volunteer, fundraising, etc.)

Bylaws, Continued on page 5





## The Woodland Park Floral Company

An early enterprise in Sumner, Washington

This article ran May 14, 1914, in the  
*Sumner News*

### A "GROWING" INSTITUTION

#### A Big Plant Where They Raise Big Plants

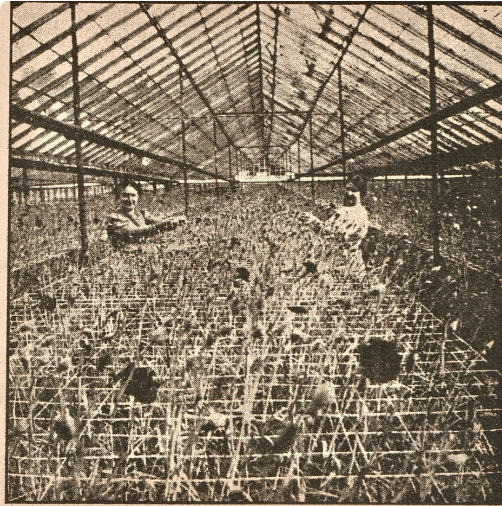
The majority of the older residents of Sumner have no doubt visited the greenhouses of the Woodland Park Floral Company, but our thriving little town is constantly increasing in population, and among the more recent settlers there are probably many who have never found opportunity to inspect the institution. Of the latter class was a representative of the News, who took advantage of one of the beautiful days the fore part of the week to take the long anticipated trip, and the result of the visit may be of interest to others who have not yet seen the plant.

The reporter found Mr. Poolman, the president and manager, busy in his private office, but he courteously put aside his work and escorted us through the spacious houses, explaining the method of propagation and work of caring for the growing plants.

Although expecting to see things being done on a large scale, it was yet a surprise when actual figures were given us.

The plant is comprised of eighteen separate houses, eleven of which are 300 feet in length, four are 100 feet and three are 150 feet. Should a person walk all around each of the benches in these houses he would have traversed a distance of three miles upon completing the inspection of the buildings. 150,000 square feet of glass were used in the construction, and eleven or twelve miles of steel pipe are necessary for radiation.

To heat these buildings during the eight months of the year that artificial heat is required there is consumed 400 cords of wood and 14 carloads of coal. The temperature is kept at about 65 degrees



Scene in one of the Carnation Houses, Woodland Park Floral Co.  
*Sumner News*, May 14,

in the daytime and 60 degrees at night in the vegetable houses; for vegetables, as well as flowers are grown in these wonderful glass houses - and vegetables of such size and in such wealth of bearing as was an eye-opener to the News reporter.

The first apartment visited was one of the carnation and chrysanthemum houses. These flowers are the specialty of the Woodland Park greenhouses, although ferns, lilies, cyclamen, sweet peas, orchids, poinsettias and other flowers are grown in profusion. Of the first named, carnations, 35,000 are propagated each year, besides which they are now carrying over some hundreds of plants which have been topped and are putting out new growth. An idea of the immense demand for carnations can be

had from the fact that while 2000 blooms are cut for shipment each day, and 50,000 cuttings are shipped yearly, the supply does not nearly equal the demand. Chrysanthemums are in no less favor, though, of course, the season is only about three months' duration.

Sixty varieties are cultivated at the greenhouse and require individual and different care. Where one thinks of taking thirty thousand chrysanthemum cuttings and handling separately, planting, transplanting, pruning and budding each, and finally cutting the blooms for shipment. One can only faintly conceive the vast amount of care and attention given to these plants alone. Each plant is allowed to bear but a single bloom, except in the case of the pompoms, and, save in the last named, branching is not permitted. Thus each bloom is the product of a single plant, and it attains great size and perfection, some having been known to reach a measurement of 12 to 14 inches across the crown. Forty to fifty thousand blooms per year are cut for shipment from the

Woodland Park Greenhouse. The Easter lilies marketed aggregate about 5,000 a season. Callas are also cut in large numbers. One thousand potted ferns of several varieties and two thousand cyclamen plants are shipped annually. The latter are slow growing plants and at maturity when blooming in profusion are often two years old, but they bring good

*Continued on page 4*



**Woodland Park Floral  
Company employees in  
an un-dated picture  
post card**



*Continued from page 3*

prices, single plants sometimes selling as high as \$1.25. Poinsettia for the Christmas market and orchids are also grown here.

Seattle, Bellingham, Tacoma, Vancouver, B.C. and Oregon points are the chief markets for cut flowers says Mr. Poolman, but stock is shipped to almost every state in the union and to Canada. It can readily be seen that the Woodland Park Floral Co. is quite an advertising medium for Sumner.

Beautiful as the flowers houses are, the real wonder of the greenhouse is the portion devoted to vegetable culture. As Mr. Poolman opened the door of the tomato house we found ourselves in a veritable forest.

Tomato plants higher than our heads with stems thicker than a baby's wrist, and clusters of tomatoes 12 inches in length, 20 to 30 in a cluster are, indeed, a novel sight.

The plants are trimmed to a single stalk that is, no branching is permitted. Many of the settings contain as high as forty perfect or fertile blooms - some even have fifty. There are 4,500 plants in the greenhouse, and it is expected that 12 or 15 tons of fruit will be picked this season.

Some fruits have already been shipped, commanding 35 cents per pound, the highest price ever received.

The cucumber houses of which there are four 20x150 feet, were a pretty and curious sight, which should be seen to be enjoyed. One man's entire time is devoted to caring for and pruning the vines. This does not include picking. The

size of the fruit is amazing. One of the common variety, not yet matured, measured sixteen inches in length, while an English cucumber which we saw was 27 inches in length and 3 1-2 inches in diameter, and still growing. An average of 350 dozen is the present weekly pick.

The greenhouses are kept in perfect order, the plants of a beautiful healthy color, free from insects, and looking as though their greatest delight was to respond with their utmost highest to the care bestowed upon them.

Twenty-four persons are now employed about the plant and grounds, but at certain seasons as many as thirty-five have been required to perform the work. This is no mean showing for an

institution which we have scarcely given the credit due it as a financial factor and a valuable asset in our community. During the summer the present force of employees will be swelled by a large colony of berry pickers, for it is estimated that over two hundred persons will be employed to care for the crop of red and black berries, of which there are twenty-

five acres on the greenhouse company's ranch.

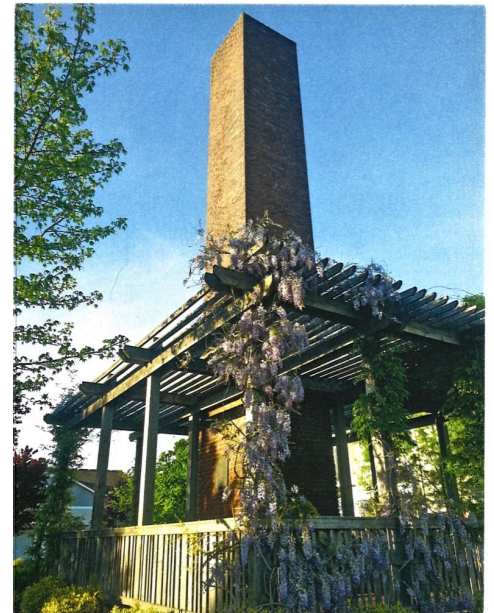
The Woodland Park Floral Co. was organized nearly twenty years ago. Seven years ago the plant was established here and is incorporated, with S. Poolman as president and F.A. Deitchler as secretary.

This is a permanent institution in which we may well take a pardonable pride, and which should be one of the points of interest for visitors in our city. Being located only one and a half miles from town it is a motor ride of only a few minutes; or those who enjoy walking will find it a little more than a half hour's tramp, and a very pleasant one.



**Woodland Park Floral Co.**  
Wholesale Growers of  
Carnation and Chrysanthemum Cuttings.  
Write for Prices.  
**WOODLAND PARK FLORAL CO.**  
Telephone 814 SUMNER WASH.  
Mention The Review when you write.

*Florists' Review, February 1917*



*Courtesy, Sumner Friends of the Library*

**(right) A chimney from the original greenhouse heating system can be seen at 160th Av.Ct. East in Sumner**

We found early mentions of the Woodland Park Floral Co. in the Seattle Polk Directories, 1880 and 1889. They listed Alfred Peterson and Edd Marriott as owners with the retail address at 806 Second Ave. and the greenhouses at Woodland Park.



**Woodland Park Greenhouse today, 16119 64th St. East in Sumner**

The 1907 American Florist Journal and an edition of the 1907 Sumner News tells of the move to Sumner where the partners bought 25 acres from Fred Knight and planned to build 100,000 feet of new greenhouses.





Bylaws, Continued from page 2



Sumner Historical Society

## Caretakers of the Ryan House Museum

**Mission Statement:** To collect, preserve and display books, letters, diaries, photos, clothing, and other artifacts of the history of Sumner and surrounding areas

### Officers

President: Kris Arnold  
Vice President: Linda Sader  
Treasurer: Pam Prasch  
Secretary: Dale Loseth  
Curator: Vicki Conner

### Board Members

Vicki Conner  
Roger & Carolyn Stroeve  
Linda Sader  
John Galle  
Marcha Lindberg  
Dale & Rita Loseth  
Ed Hannus  
Michelle Champlin  
Leroy Goff  
Kris Arnold  
Patricia Tribby  
Sara Lucas  
Ken Woolery  
Mary Beth Ryan  
Pam Prasch  
Amie Rang



The Ryan House Museum is affiliated with the NEA as a Blue Star Museum offering free admission to the nation's active duty military and their families.

Interested in joining the Sumner Historical Society?

You can find a membership form on our website.



**Visit our web site!**

[www.sumnerhistoricalsociety.com](http://www.sumnerhistoricalsociety.com)

*Don't want to type all that into the browser?*

Just Google for **Sumner Historical**  
or **Ryan House Museum**  
You will get there!



You can link your Fred Meyer Rewards card to benefit the Sumner Historical Society. Go to their website  
[www.fredmeyer.com/communityrewards](http://www.fredmeyer.com/communityrewards)

Follow the instructions to Find us by name or by our non-profit number: 88948

When you shop you still earn your points plus you help the historical society earn a donation!

b. The Director Emeritus shall be entitled to receive all written notices and information which are provided to the Board of Directors, to attend all Board meetings, to participate in meetings of the committees in which they serve, and encouraged to attend all other events conducted by the society.

c. The Director Emeritus shall not be counted in determining a quorum at a meeting, entitled to hold office or entitled to vote at any Board meeting.

d. Election: The Board will establish a three member Director Emeritus nominating committee drawn from the current Board. At any Board meeting, the board may vote to refer one or more individuals to the committee for review. After review, the committee will present their findings to the Society's Board of Directors for it's consideration. If the findings include a nomination of potential candidates the committee will present supporting statements. A simple majority vote of Directors at a regular meeting at which a quorum is present is sufficient to approve an appointment.

e. Removal: A Director Emeritus may be terminated by a 2/3 vote of the Board for any activity detrimental to the Society. Terminated members will be notified in writing by the President of the Board. A terminated member may not participate in Society business.

f. Election to or removal from a Director Emeritus position may take place at any regular meeting of the Board of Directors.

## Ryan House Museum Spring Calendar

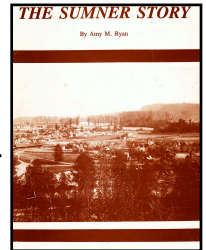
April 6 ~ Open for season,  
every Saturday & Sunday, 1 – 4 pm,  
~ Daffodil Parade

### Exhibits and special events:

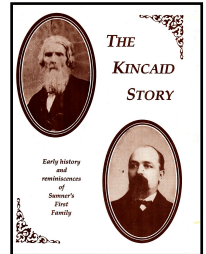
April 6 ~ Daffodil Festival Exhibit at the museum  
April 14 ~ General Meeting, 2 pm  
April 20, 21 ~ Closed for Easter  
May 12 ~ Closed for Mother's Day  
May 25, 26 ~ Closed for Memorial Day  
May 26 -10 am Ceremony at Sumner Cemetery, noon lunch

### Available at the Museum

***The Sumner Story***  
The History of Sumner  
by Amy M. Ryan



***The Kincaid Story***  
Early history and  
reminiscences of  
Sumner's First Family



***Visit our gift area for books, cards and items of local interest***

### Sumner Historical Society Ryan House Museum

1228 Main Street  
Sumner Washington, 98390

