

Founding Vice President of the Valley Fair in 1900, President from 1906 to 1925. He said this about the fair,

“A farmers fair,  
for the farmer  
and about the farmer”

W. H. PAULHAMUS  
35 Years in the valley, the farmer's friend

1864 -1925 Born in Pennsylvania, moved to Sumner in 1890, one of 100 Washington citizens in the Washington State Centennial Hall of Honor

## WASHINGTON STATE SENATOR 1907 - 1913

- Negotiated lower railroad rates for shipping the products of the valley
- 1907 Regulations on wholesale firms handling agricultural products
- Flood Control, Puyallup and Stuck rivers
- 1907 Reopening of the Puyallup Western Washington Experimental Station
- 1909 Appointed by governor to the National Farm Congress



**MADE 'EM YELL  
FOR BERRIES OF  
THE PUYALLUP**

W. H. Paulhamus Put Can-  
ning and Fruit Industry  
on Prosperity Road  
CO-OP. PLAN SUCCESS



## Square Deal Boosts Cannery Business

By W. H. Paulhamus

[illegible]

**Seattle Star, 9-15-1917**

# PUYALLUP & SUMNER FRUIT GROWERS ASSOCIATION

In 1902, a leader in local agriculture, Palhamus spearheaded the effort to organize a cooperative association to centralize processing and marketing for berries, fruit and other produce grown by valley farmers. The first year's focus was providing fresh product to existing markets.

Later, canneries were purchased and built and a special freezing process developed. Paulhamus expanded the business into markets ranging as far as Winnipeg, Dallas and Boston.

By 1915, there were 1,800 members and the association was providing agricultural education in farming methods and co-op stores for members where they could purchase groceries and sundries at low prices.



- 1920 The canneries were sold to the Hunt Brothers Packing Co.
- 1992 The PSFGA Canning Corporation bought them back.
- 1935 SFGA Canning Corporation combined with the Washington Berry Growers Association to form Washington Packers.
- 1946 Sold to Kelly-Farquhar
- 1949 Purchased by DEWKIST
- Later, the Sumner plant was closed, the Puyallup plant became Valley Packers.

*Sumner Historical Society*





## MAPLELAWN FARM Home to "Three Story Farming"



**On Wood Avenue** in Sumner stands a home that in the early 1900s was the testing ground for a concept to successfully manage small acre farms. The theory, developed by W.C. Paulhamus, a leading figure in early valley agriculture was **"Three Story Farming"**.

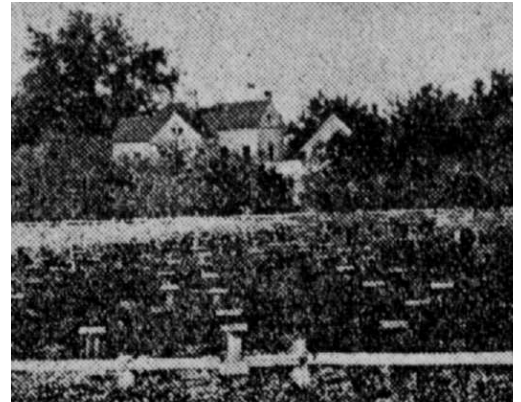
It promoted the value of raising tree fruit, bush berries, poultry and dairy cattle on the same land at the same time.

The house was built in 1882 by E.C. Meade who made a fortune in hops and then lost the house and 60 acre farm when the hops industry failed. Paulhamus bought the farm in 1897.

Maplelawn Farm had 100 Bing cherry trees. Paulhamus also recommended sour cherries, like the English Marilla and the Montmorency.

The farm cultivated Cuthbert Red raspberries, Evergreen blackberries, gooseberries, asparagus, and rhubarb.

Poultry that Paulhamus promoted included White Leghorn, Brown leghorn and Barred Plymouth Rock chickens along with geese, ducks and pigeons.



Maple Lawn Farm pictured in a Seattle publication, the "Ranch" in 1910.



Maple Lawn Farm, 1920, *Sumner Historical Society*

### I Desire to Purchase

10 to 15 head of two-year-old grade Jersey or Guernsey heifers. Must be from good milking mothers; high-class stock. Quote price and where stock can be seen.

**W. H. Paulhamus, Sumner, Wash.**

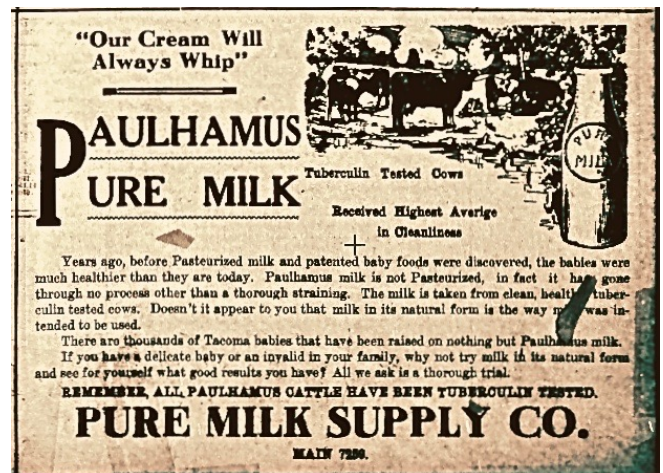
"Ranch" 1913



The VFW building on Willow was a Maple Lawn Farm Barn, *Sumner Historical Society*

The farm had forty registered Jersey cattle. This was the first dairy in Pierce County to supply certified milk. This was by request of the Tacoma Medical Society. Tuberculous was rampant in area dairy cattle and Paulhamus agreed to be the first to implement safe certification processes in his dairy.

Soon the dairy was using wagons pulled by four horse teams to deliver certified milk to Tacoma daily.



Tacoma Times. 1915